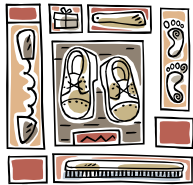




## Newsletter

Dear Parents/Friends/Guardians

2<sup>nd</sup> October 2009



### Shoe Box Appeal

This year we are again collecting shoeboxes for Link Romania. We would ask you to follow the instructions on the leaflets that will be distributed and to hand in your shoeboxes during the week of Monday 19<sup>th</sup> October (the week before half term). We can then request a pick up for the week after half term without being swamped by shoeboxes! We would also like to kindly remind you of the gift aid form on the back of the leaflets as for every £2 donated; Link Romania will receive an extra 50p from the government – for free. The shoebox appeal video can be viewed on the website at [www.linkromania.co.uk](http://www.linkromania.co.uk) or on [www.youtube.com](http://www.youtube.com).

Thank you in advance for your kind donations which will make a huge difference to poor and needy families in Eastern Europe.



### Willow Class

From Monday 6th October, Mrs Cheryl Bull, who is in her third year of her BA Honours Degree in Education, will be joining Willow Class for eight weeks. This will give the children more opportunity to work in small groups and we look forward to welcoming her on Monday. Mrs Bull will also be joining the class on their trip to Ufton Court.



### Second Hand Uniform Sale

Friday 9th October at 3.00pm, next to the stamping shelter.

### Christmas Cards



It's that time of the year again! Christmas is just around the corner and we've decided to run the successful Christmas card design event. All the children are invited to create a design which will feature on their own personalised Christmas cards. Each pack of 5 cards costs only £5.00; a total bargain. Each sample card along with an order form will be sent home with your child. Once received by you, the order forms will need to be sent back to the school within 3 days so that we're able to get the cards printed and returned to us before the Christmas rush.

So, don't rush out and buy any cards yet, wait to see what your own Picasso/Monet can do...

Dorn Kipping  
Christmas Card Coordinator



### School Council

The school council has been chosen with each class voting to appoint their representative. Well done to all of the children who will hold these positions for this academic year. Holly and Sycamore reps will be chosen next week once they have had more of an opportunity to get to know each other!

Oak	Josh Kaushal
Pine	Alistair Smith
Elm	Harley Stevens
Chestnut	Hannah Clayton
Beech	Alex McMillan
Cedar	Jack Shreeve
Willow	Jana Baguley
Cherry	Anna Branch
Sequoia	Matthew Galbraith
Juniper	Fraser Brown
Ash	Hugh Crowley
Hawthorn	Calum Brown
(Secretary)	Jack Thetford



### House Captains

Well done to all the House Captains, who were chosen by the staff. They will have a greater responsibility this year as the House system builds on last year!

Ruby	Callum Thompson and Maia Sethi
Emerald	Yash Rastogi and Maia Kipping
Topaz	Molly Brown and Molly Brown
Sapphire	Freya Holliman and Harry Allpass

### KS1 Representatives

Ruby	Juliet Taylor and Ben Hunter
Emerald	Amelia Tymofijiw and Harvey Ashley
Topaz	Cameron McIndoe and Ella Edwards
Sapphire	Tristan Rints and Abby Hunt



### School Travel Committee

We are delighted that the children are making such good use of the new Cycle and Scooter Shelter. For everyone's safety, we have put together a set of rules 'Cycle and Scooter Agreement' that must be followed to help ensure your child's safety whilst travelling to and from school. You all should have received a copy of this agreement this week. Please will you read it through with your child and send

back a signed copy for our records. Hi-vis vests will be on sale in the stamping shelter hopefully next week: £2 each or 2 for £3.50.

Next week, you (and local residents) will receive a note regarding car parking. We have received a number of complaints about unsafe parking and really hope that all parents/carers/residents will ensure that they park safely, i.e. not on the pavements/verges, not on corner bends, not blocking driveways and not opposite the yellow zig-zag lines. Please please please park with care.

Finally, as usual, Burford School will be taking part in 'Walk to School' month by holding a 'Walk/cycle/scooter to School' and 'Celebrate the new bike/scooter Shelter' week in the last week before half term (19th - 23rd October). There will be prizes for children who use sustainable transport that week - more details to follow.'

Vanessa Hill



### Parent Forum Reps

Thank you to all the parents who are willing to be class representatives for the parents' forum. The representatives are:

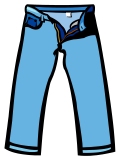
Sycamore	Vanessa Marston
Pine	Carolyn McCall and Sarah Holdway
Chestnut	Gillian Bowers
Beech	Michelle Livett
Cherry	Tracy Lowden
Sequoia	Mary Nash

We are still looking for parents to represent Holly, Oak, Elm, Cedar, Willow, Juniper, Ash and Hawthorn. Please contact the school office as soon as possible if you would like to volunteer.



### Reception pupils 2010/11

If you have a child who will be 5 during the academic year September 2010 – August 2011, don't forget to fill in the form to apply for a school and return to County by 5pm 22<sup>nd</sup> November or midnight if submitted on-line. Copies of the County booklets and forms are available from the office if you would like one.



### Charities

Thank you to all those who wore jeans in aid of 'Jeans for Genes' day this year. We'll let you know how much we raised once all the money has been counted!



### Harvest Festival

Our harvest festival assembly will be on Friday 16th October, so please send in your donations of food (tea, coffee, sugar, biscuits, tins, cakes, fruit, vegetables etc) on that Friday morning. **We would appreciate receiving your gifts on that day and not before as we are short of storage space.** It would also be helpful if you could send in any spare shoe boxes. If you would like to volunteer to receive the food from the children from 8.30am on Friday 16th October and help create the display in the hall before the assembly (you would then be very welcome to stay and watch) or to box up the harvest gifts after the assembly or, if you are CRB checked, to help distribute the boxes around Marlow Bottom by car with Year 6 children, please contact the school office. If you are aware of any senior citizens who don't already receive one of our harvest gift boxes each year and who live in Marlow Bottom please inform the office so we can add them to our list.



### Book Week

'Book Week' will not be taking place next week as previously indicated in the diary. This year, we have decided to hold our book day as part of a 'writing week' which we will be running in the week beginning 16th November. This is to help children to understand how their writing can be enjoyed by others. More details will follow soon.



### New or amended dates in bold

#### Dates for your Diary

Wednesday 7 <sup>th</sup> October	Second 11+ exam AM
Friday 9 <sup>th</sup> October	FoB Cake Sale 3.15pm
<b>Sunday 11<sup>th</sup> October</b>	<b>FoB Sponsored Walk 2pm</b>
<b>Saturday 17<sup>th</sup> October</b>	<b>FoB Quiz Night 7.15pm</b>
<b>Monday 19<sup>th</sup> October</b>	<b>Walk/Cycle/Scooter to School week</b>
Monday 19 <sup>th</sup> October	Y2 Florence Nightingale
Wednesday 21 <sup>st</sup> October	Ward-Hendry individual photographs

Friday 23<sup>rd</sup> October

Monday 2<sup>nd</sup> November

Tuesday 3<sup>rd</sup> November

**Saturday 7<sup>th</sup> November**

Monday 9<sup>th</sup> November

Tuesday 10<sup>th</sup> November

Wednesday 11<sup>th</sup> November

Thursday 12<sup>th</sup> November

Monday 16<sup>th</sup> November

Monday 23<sup>rd</sup> November

Tuesday 24<sup>th</sup> November

Friday 4<sup>th</sup> December

Tuesday 8<sup>th</sup> December

Wednesday 9<sup>th</sup> December

Thursday 10<sup>th</sup> December

Friday 11<sup>th</sup> December

Monday 14<sup>th</sup> December

Tuesday 15<sup>th</sup> December

Wednesday 16<sup>th</sup> December

Thursday 17<sup>th</sup> December

Friday 18<sup>th</sup> December

Monday 4<sup>th</sup> January

Tuesday 5<sup>th</sup> January

Friday 12<sup>th</sup> February

Friday 12<sup>th</sup> February

Monday 22<sup>nd</sup> February

Wednesday 24<sup>th</sup> February

Thursday 25<sup>th</sup> February

Tuesday 23<sup>rd</sup> March

Wednesday 24<sup>th</sup> March

Thursday 25<sup>th</sup> March

Thursday 1<sup>st</sup> April

Monday 19<sup>th</sup> April

Monday 26<sup>th</sup> April

Monday 10<sup>th</sup> May

Monday 17<sup>th</sup> May

Thursday 27<sup>th</sup> May

Friday 28<sup>th</sup> May

Monday 7<sup>th</sup> June

Monday 14<sup>th</sup> June

Tuesday 15<sup>th</sup> June

Monday 21<sup>st</sup> June

Tuesday 22<sup>nd</sup> June

Monday 28<sup>th</sup> June

Tuesday 29<sup>th</sup> June

Tuesday 29<sup>th</sup> June

Friday 2<sup>nd</sup> July

Monday 5<sup>th</sup> July

Tuesday 6<sup>th</sup> July

Wednesday 7<sup>th</sup> July

Thursday 8<sup>th</sup> July

Tuesday 13<sup>th</sup> July

Wednesday 14<sup>th</sup> July

Thursday 15<sup>th</sup> July

Wednesday 21<sup>st</sup> July

**FoB Hot Dogs**

**Y3 Gym Festival at Great Marlow**

End of first half-term

Training Day

Term starts

**FoB Fireworks 5.30pm**

Book Fair Week

Y3 Roman Day

Parents Evening 4.00 – 7.00pm

Y5 Victorian Day

Parents Evening 4.00 – 7.00pm

**Road Safety Week**

Writing Week

Y4 to Ufton Court (Cherry)

Y4 to Ufton Court (Willow)

Christmas Bazaar

KS1 Concert 1.30 – 3.00

KS1 Concert 1.30 – 3.00

KS1 Concert 1.30 – 3.00

Clic Sargent concert – Royal Albert Hall

OAP Xmas Party 1.30 – 3.00

Christmas Carol Concert 7.00 – 8.30pm

Reception Nativity for parents 11.00 – 12.00

Christmas Parties

End of term 1.30pm

Training Day

Term starts

**'Dragons in Europe' visiting Y3 am only**

'B' Factor Final PM

End of first Half-term

Term Starts

Parents Evening 4.00 – 7.00pm

Parents Evening 4.00 – 7.00pm

LKS2 Concert 1.00 – 3.00pm

LKS2 Concert 1.00 – 3.00pm

LKS2 Concert 1.00 – 3.00pm

End of Term 1.30pm

Term Starts

Y5 PGL to Osmington Bay

KS2 SATs week

Y6 PGL to Barton Hall

End of first Half-term

Training Day

Term starts

KS1 Sports Day 9.30 – 1.00 (inc. picnic lunch)

KS2 Sports Day 9.30 – 3.00 (inc. picnic lunch)

Reserve KS1 Sports Day 9.30 – 1.00 (inc. picnic lunch)

Reserve KS2 Sports Day 9.30 – 3.00 (inc. picnic lunch)

Reserve KS1 Sports Day 9.30 – 1.00 (inc. picnic lunch)

Reserve KS2 Sports Day 9.30 – 3.00 (inc. picnic lunch)

11+ meeting for Y5 parents 7.00 – 8.00pm

Reports out

Helping Parents Tea Party

Induction Day

Open Evening 6.00 – 8.00pm

Summer music concert

UKS2 Concert 7.00 – 9.00pm

UKS2 Concert 1.00 – 3.00pm

UKS2 Concert 7.00 – 9.00pm

Term Ends 1.30pm

**Academic Year 2010/2011**

Wednesday 1 <sup>st</sup> September	Training Day
Tuesday 2 <sup>nd</sup> September	Term starts
Friday 22 <sup>nd</sup> October	First half-term ends
Monday 1 <sup>st</sup> November	Term starts
Friday 17 <sup>th</sup> December	Term ends
Tuesday 4 <sup>th</sup> January	Training Day
Wednesday 5 <sup>th</sup> January	Term starts
Friday 18 <sup>th</sup> February	End of first Half-term
Monday 28 <sup>th</sup> February	Term starts
Friday 8 <sup>th</sup> April	Term ends
Wednesday 27 <sup>th</sup> April	Term starts
Friday 27 <sup>th</sup> May	End of first half-term
Monday 6 <sup>th</sup> June	Term starts
Friday 22 <sup>nd</sup> July	Term Ends

Yours Sincerely



**Mrs. K Whittington**  
Headteacher

This newsletter is also available electronically on the school website. If you would like to receive an automatic email please refer to the 'subscribe' section on the school website [www.burfordschool.co.uk](http://www.burfordschool.co.uk)