

School News

'Enjoy, Achieve, Succeed Together'



ISSUE

12

21st March 2025



Headteacher message – Mrs Marshall

Attendance

Nursery

Recycling

Year 1 – Science Oxford

Year 4 – The Living Rainforest

Rugby

Friends of Burford

Key Dates

Headteacher Awards

Well done to everyone who received a Headteacher's Award last week!

Holly – Amelie and Neveah

Sycamore – Veer and Henry

Pine – Amelia and Harry

Oak – Ellis and Nicole

Chestnut – Marshall and Zoe

Elm – Grace and George

Beech – Albie and Cianan

Cedar – Elza and Wilfred

Juniper – Betsy and Layne

Willow – Noah and Josh

Cherry – Summer

Hawthorn – Aarush, Fintan and Jack R

Ash – Alexandra and Harry

Millionaire Readers Awards

Nathanial – 2 Million words

Alexandra – 1 million words

Dear Burford families,

What glorious weather we have had the past two days; the Year 5 children and Team Woodrow 2025 have really been lucky. Two years ago, it was icy and it snowed. I am sure some staff members lost some fingers to frostbite that year 😊 Thank you to Mrs Corvan, Miss Edwards, Miss Housden, Mr Mettler, Mrs Lewis, Mrs Pimlott and Mrs Puddephatt for your time and all the fabulous photos on Google classroom!

From the 31st March, the DfE require all schools to recycle as much waste as possible, including food, to reduce landfill. At home, please support your children in recycling to reinforce our recycling pledge at school. Thank you to Mrs Fowler-Marsh and School Council for all your efforts in promoting this initiative.

Attendance – ***please read on*** – it is imperative that your child comes to school as much as possible. Term time holidays and odd days off for family events really impact your child's learning and, in some cases, makes your child feel anxious because of this lost learning and lost social time with their peers. Attendance is not only affected by not coming into school in the morning (one session) or afternoon (one session) but also by being late for the school register too. I appreciate that we have gas road works in Marlow Bottom Road but please, if you can, park at the Marlow Village Hall or Barn Club and take a stroll into school. We do understand that if your child is ill, they are in no fit state to learn, and therefore 'save' non-attendance for days that are really needed. Thank you.

Have a lovely weekend,

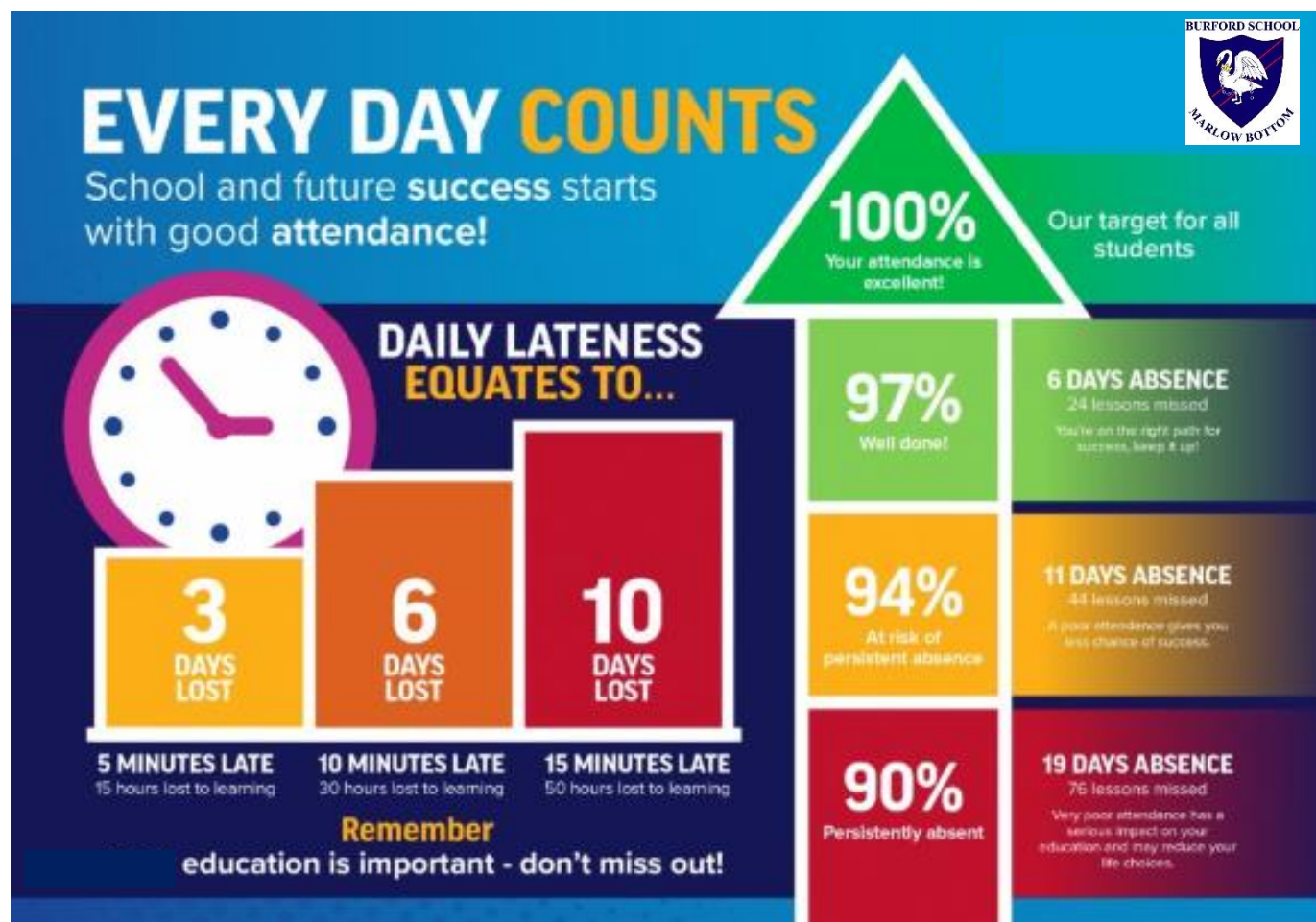
Mrs Marshall
Headteacher

'Enjoy, Achieve, Succeed

Burford School & Nursery, Marlow Bottom

Attendance

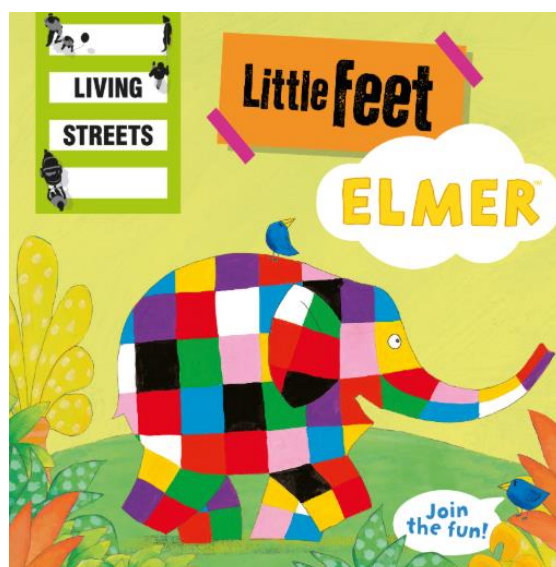
Regular school attendance is essential for your child's learning and well-being. Every child's attendance should be a minimum of 96%. We appreciate your support in ensuring that your child is present and ready to learn every day. Please ensure that children are in school by 8:40am. If your child is recorded as 'late' in the morning, that affects their overall attendance too.



Nursery

After the Easter holidays, Burford Nursery we will be taking part in the Living Streets 'Little Feet' programme. This activity is designed to help the younger children and their families experience the benefits of walking when travelling to and from their early years setting. The activity will take place over a 2 - 4 week period and will finish with each child receiving a reward sticker.

Ms Fowler Marsh



Recycling

The UK Government has announced a new recycling plan that aims to create a new, simpler common-sense approach to recycling. All schools in England must comply with the new regulations. From 31 March 2025, recycling and collection measures for all types of recyclable waste are required to be in place.

At Burford School we have invested in new waste bins for food waste to sit alongside our current recycling bins and general waste bins. All pupils will be encouraged to use the correct bins for their waste and school council will support this by providing clear signage in key areas – see below.



An assembly will help the pupils to understand this new process. We hope that the pupils will support this initiative and it helps them to understand the importance of recycling and looking after our environment.

VEOLIA

DRY MIXED RECYCLING

Clean, Dry and No Contamination

- ✓ Paper & Cardboard
- ✓ Plastic Bottles
- ✓ Plastic Milk Bottles with Lids
- ✓ Drinks Cartons i.e Tetra Pak
- ✓ Cleaning Product Bottles
- ✓ Plastic Containers
- ✓ Plastic Pots
- ✓ Plastic Tubs
- ✓ Plastic Trays
- ✓ Fruit Punnets
- ✓ Plastic Water Cups
- ✓ Cans
- ✓ Tins
- ✓ Aluminium Trays and Foil

X No Black Plastic, Batteries, Films or Coffee Cups



VEOLIA

FOOD WASTE



All food waste, tea bags, coffee grounds

X No Tissues or Napkins

STEM Week

STEM week at Burford will take place 31st March-4th April and we are all very much looking forward to it. In preparation for this, please can parents ensure that each child has an empty tissue box and an empty plastic bottle (from fruit juices or fizzy drink, any size will do).

Year 1 – Science Oxford

Year 1 had an amazing time at Science Oxford on Thursday 6th March. Pupils had the opportunity to take part in so many activities. We asked the children what their favourite parts of the trip were and they said:

- Looking at the ISS and Orion's Belt in The Planetarium
- The Exploration Zone
- Crafting in the Exploration Zone
- Watching balls and scarfs get sucked in and shot back out again from a maze of plastic tubes
- Playing with the ice and water in the Exploration Zone
- Creating a film about dinosaurs
- Making Paper parachutes and shooting them into the air
- Using the thermal imaging camera on ourselves
- Biting on a straw and hearing music that no one else around you could hear
- Using our senses to identify what materials were in plastic tubes
-

We loved it, it was great fun!

Year 1 were brilliant representatives of Burford School and we are extremely proud of all of the children. They excelled in exploring different scientific concepts and the whole day was thoroughly enjoyed by all members of staff, Parent helpers and children alike.

Special thanks go to all the parents that offered to help on the visit - their care and guidance ensured everyone had a marvellous trip.



Year 4 – The Living Rainforest

On Thursday 6th March, Year 4 enjoyed a wonderful school trip to The Living Rainforest in Newbury.



The children were shown around by knowledgeable tour guides who taught us all about the rainforest. We got to see the plants and animals that we had learnt about in Geography, and were taught all about the impact of deforestation.



We saw a lot of animals including pygmy marmoset monkeys, a Channel billed toucan and an armadillo named Harry.



The Living Rainforest was very noisy and we were surprised to find out that the loudest animals were the tiniest frogs. We were exceptionally lucky to see Cinnamon, the two-toed sloth eating her breakfast and moving around the treetops.



The children enjoyed playing in the sunshine after lunch and were wonderful ambassadors for our school.
Mrs Pease and Mrs Creek



Parent Representatives

The next Parent Forum meeting will be on 5th June 2025. If you have any feedback, please complete the Google Form below.

Mrs Marshall will be reviewing the notes on 23rd May to feedback to the Class Representatives at the meeting.

These notes will then be shared with all stakeholders afterward the Parent Forum meeting.

<https://docs.google.com/forms/d/e/1FAIpQLSfO3UndSoe4UdnglpQ97-D5sh5x5DPfnwyKUvXcc9QQImBx2A/viewform?usp=dialog>

Rugby

Well done to Flossie in Year 5 who was selected to train with the England under 20's rugby team last week! Here is a recount of her day:

'Last week I had an amazing opportunity to be a BBC Newsround Press Packer. Me and my friend, Jude, who plays rugby with me for the under 10s at Marlow Rugby Club, went to Bisham Abbey.

We got to train and interview the U20s England Rugby players for Newsround. When we met the players we were intimidated by how tall they were – the captain was twice the size of me!

We had some questions to ask them and even played a bit of rugby.

My favourite part of the day was playing rugby so we could show off our skills and run around because it was freezing cold.

I hope you enjoy watching it.

From Flossie'



School Contact Details

Following on from our previous communications, if you need to contact the school, please do so using either of the methods below:

Email: office@burfordschool.co.uk

School Mobile: 07598 250888

CONTACT US

Gift of Opportunity

The Gift of Opportunity Fund runs every academic year to raise income for projects of immediate need around the school.

The projects funded will enhance and broaden the educational experience of the pupils at Burford.

In order to meet the ambitions of the school to maintain an outstanding education and to build an equivalent environment for all pupils of Burford to enjoy during their time here, donations from the Burford family are essential as the state funding meets only the minimum requirements.

If you would like to donate to the gift of opportunity fund, please email office@burfordschool.co.uk

Friends of Burford

Get Ready for a Night of Laughs and Lucky Numbers!

Join Friends of Burford for a Comedy Bingo Evening like no other! Prepare for an unforgettable night of giggles, games, and good times as our hilarious 'Naughty Nanna' AKA Elsie Crumpet, takes to the stage to call the numbers and keep you entertained with outrageous antics and audience challenges!

Your Ticket Includes:

- A delicious paella supper to keep you fuelled for fun.
- Your first drink to kick off the evening in style.
- Your bingo card — will you be the lucky winner?

Date: 7pm on Friday 6 June

Venue: Burford School

Comedy Age Rating : 18+

Tickets: Limited availability — on sale from 10am, 4th April.

Don't miss out!

Gather your friends, bring your best bingo banter, and get ready for a night of laughs and surprises.

All proceeds go towards supporting Burford School, helping to fund valuable resources and activities for our students.

Book your tickets early to avoid disappointment — we can't wait to see you there!

Friday 6 June 2025

Friends of Burford
Present... *Elsie Crumpet's*
BINGO

Join us for a hilarious evening of Bonkers Bingo, TV Game Shows & audience participation. All with fabulous prizes!!

Ticket includes:

- 2 hours of comedy Bingo
- A delicious paella dinner
- Your first drink- Cheers!
 - Bingo cards

Ticket price £35
Cash Bar

Venue: Burford School. Marlow Bottom SL7 3PQ
Doors open: 7.00pm Carriages: 11.30pm
Comedy Age Rating 18+

Tickets go on sale 10am 4 April
www.ticketsource.co.uk/fob

Our School Parents' Netball Team is looking for new members, and we'd love for you to join us!

- All abilities welcome — whether you're a netball pro or haven't played since school, we'd love to have you
- Great for fitness — a fun way to keep active while enjoying some healthy competition.
- Meet fellow parents — connect with other parents in a relaxed and social setting.
- Support a good cause — we often participate in school fundraisers and community events.

Interested: Please email Ms Fearon sfearon@burfordschool.co.uk

Come and support us! We're playing in the **Inter-PTA Netball Tournament 2025**, Saturday 29 March 2025

13:30 - 18:00 GMT at Braywick Leisure Centre, Braywick Road Maidenhead SL6 1BN.

Huge thank you to everyone who took part in the Asda cashpot for schools!
We raised a fantastic £404.28

Parentkind
members

Membership no: 26197

Hello,

We can now confirm that we have paid your Asda Cashpot for Schools payment for Burford School.

In the Asda Rewards app, your school raised £404.28.

Cool Milk

Free milk is available for all children under the age of five in school, funded by the UK government.

In our school, this milk is provided by Cool Milk, the UK's leading school milk supplier.



When your child turns five, you are able to pay a subsidised rate for your child to continue to receive milk.

If you wish for your child to continue receiving milk from the age of five, simply register with Cool Milk directly via their website (www.coolmilk.com).

Music lessons

Many KS2 children at Burford enjoy learning to play a musical instrument. If your child would like to start learning an instrument in September, our instrumental lessons are offered through Bucks Music Trust (BMT), who provide instrumental tuition during school hours. Children will be taught for 33 lessons during the academic year, spread over the 3 terms. Lesson times are arranged on a rota basis to minimise the effect of missing the same class English/maths lesson each week.

If you would like to apply for lessons, or would like any further information, please contact Bucks Music Trust or **complete the BMT application form online at <https://www.bucksmusic.org/book-lessons-2/>**

Pupil Premium

Pupils whose parents/guardians are in receipt of the following, maybe entitled to Pupil Premium funding:

- Income Support (IS)
- Income based Job Seeker's Allowance (IBJSA)
- An Income Related Employment and Support Allowance Child Tax Credit (with no Working Tax Credit) with an annual income of no more than £16,190
- Support under Part VI of the Immigration and Asylum Act 1999
- The Guaranteed Element of the State Pension Credit (GE)
- Universal Credit with an annual net earned income of no more than £7,400 (UC)

To enable us to check your child's eligibility, please complete the application form, which can be found on the school website and return it to the school office.

If you are eligible for Pupil Premium, please read our Pupil Premium Strategy on our website to discover how we can support your child at Burford School.

Medication

If your child requires medication to be kept in school, please bring this to the school office on the first day of term, with a completed healthcare form (please note that a new form is required for each academic year) [Burford School \(primarysite-prod-sorted.s3.amazonaws.com\)](http://Burford School (primarysite-prod-sorted.s3.amazonaws.com)).

Any medications that come into school need to be brought to the school office by the parent. We are only able to administer medications prescribed by a doctor and they must have the prescription label on them.

If you require the school to administer antibiotics, we are only able to do this if the medication is required 4 times a day. Please bring the medication to the school office, with a completed form:

[Burford School \(primarysite-prod-sorted.s3.amazonaws.com\)](http://Burford School (primarysite-prod-sorted.s3.amazonaws.com))

If you have any questions regarding the medical needs of your child, please see Mrs G in the front office.

Upcoming dates

For term dates, please visit:

2024 / 2025 - [Burford School \(primarysite-prod-sorted.s3.amazonaws.com\)](https://primarysite-prod-sorted.s3.amazonaws.com)

2025 / 2026 - [term-dates-2025-2026.pdf \(primarysite-prod-sorted.s3.amazonaws.com\)](#)

Spring Term Calendar Dates:

[2024 - 2025 calendar.xlsx](#)

Please do not hesitate to contact the school office if you have any questions or comments regarding any of the events.

Polite Reminders

Do not walk up or down the school drive – it is not safe at any time of the day. Please use the pedestrian entrance and fenced off walk way.

School gates

Children should be dropped off at school ready for the start of the school day at 8.40am. Please ensure that you have left the school site before 8.50am after school drop off, as this is when the gates will be locked. The side gate to the playing field car park will not be unlocked during the school day, so if you are attending for a meeting, please ensure that you use the main school gate.

Lunch boxes / snacks

Please do not give your child sweets, crisps, nuts or chocolate bars as their snack, or sweets or chocolate bars in their lunch boxes.

Parking

To help keep our children safe, please do not stop on the zigzag markings when collecting or picking up children or turn around at the entrance to the school drive. Please also note that the school car park is **strictly for staff only**.

When collecting your children from school and from after school clubs, parents **should not park in the school car park**. There have been a number of occasions where cars have been too close to the children and other cars have been blocked in and have been unable to leave when needed. **Please use the playing field car park or park along the main road.**

Please do not leave your engines running when waiting for your children at pick up and drop off.

Hard Copies of letters

Where possible, if we require a form to be completed, we will always endeavour to provide this as an electronic form so that parents are not required to print these at home.

On the occasions where this will not be possible, if you require a printed copy, please let the school office know and they will be happy to print a copy for you.

Medication

If your child requires any medication to be kept in school, please ensure that the medication is brought to the school office with the appropriate forms. If your child takes regular medication such as inhalers, please make sure we have the medication and that it is in date. We are only able to administer prescribed medications.

Dogs

Dogs are **not** permitted on the school grounds at any time. This includes dogs walking or being carried.

Weekly Letter Summary

Week Commencing 10th March

Whole School

Newsletter - [newsletter-march-2025-issue-11.pdf](#)

Nursery

Easter Nest – [nursery-and-reception-easter-nest-letter-stem-week.pdf](#)

Reception

Height and weight measurements – [bucks-school-year-r-ncmp.pdf](#); [parentportal-infographic-final-1.pdf](#)

STEM week - [reception-parents-letter-stem-week-resources.pdf](#)

Easter Nest - [nursery-and-reception-easter-nest-letter-stem-week.pdf](#)

Year 5

Bikeability – [bikeability-letter-to-parents.pdf](#)

[burford-school-level-2-qr-parent-letter.pdf](#)

Week Commencing 17th March

Nursery

Whole School

Summer Term After School Clubs – [Burford School](#)

Parent Forum – [burford-families-feedback-form-2024-25.pdf](#)

Newsletter -

STEM Week is fast approaching. Please could you bring in any empty tissue boxes and plastic bottles (i.e. Milk bottle or large drink bottle)

Reception

Church Visit- <https://primarysite-prod-sorted.s3.amazonaws.com/burford-school-marlow/UploadedDocument/1969b65c-61a9-4183-95a8-fe9a9517f49e/church-trip.pdf>

Woolley Firs- <https://primarysite-prod-sorted.s3.amazonaws.com/burford-school-marlow/UploadedDocument/da4abc2a-c4af-4bd9-8479-c2e02be8a1ab/woolley-firs.pdf>

Year 1

Maidenhead Synagogue- <https://primarysite-prod-sorted.s3.amazonaws.com/burford-school-marlow/UploadedDocument/e30ead00-6fa7-4e67-beba-d6a867008a14/maidenhead-synagogue.pdf>

Year 2

Windsor Castle – Reminder – Monday 24th March – If the weather forecast is due to rain, please ensure that your child has a rain coat, and if it is due to be warm, please ensure that they have a sun hat and suncream already applied -

[windsor-castle.pdf](#)

Year 2 assembly to parents - [year-2-assembly.pdf](#)

Year 3

Swimming water safety reminder- <https://primarysite-prod-sorted.s3.amazonaws.com/burford-school-marlow/UploadedDocument/8cff7526-8948-439f-a08f-2dd76ae61882/swimming-lessons-water-safety.pdf>

Year 4

Assembly - [year-4-assembly.pdf](#)

Year 5

Bikeability – If you would like your child to take part but have not yet signed up, please do so before Friday 28th March –

[bikeability-letter-to-parents.pdf](#)

[burford-school-level-2-qr-parent-letter.pdf](#)